

Product Information

3-color Regular Range Protein Marker (9-180 kDa)

BYPL500

Size: 250 μ l \times 2
5 μ l per well for 100 applications

Storage

4°C for 3 months
-20°C for long term storage

Loading Volume


- 3 μ l or 5 μ l per loading for clear visualization during electrophoresis on a 15-well or 10-well mini-gel.
- 1.5~2.5 μ l per well for general Western blotting transfer.
- Apply more for a thicker (> 1.5 mm) or larger gel.

Contents

Approximately 0.1~0.4 mg/ml of each protein in the buffer (20 mM Tris-phosphate (pH 7.5 at 25°C), 2 % SDS, 0.2 mM Dithiothreitol, 3.6 M Urea, and 15 % (v/v) Glycerol).

Guide for Molecular Weight Estimation Migration

patterns and approximate MWs (kDa) of BYPL500 ExcelBand™ 3-color Regular Range Protein Marker in different electrophoresis conditions are listed below:

| Band | Color | TRIS-GLYCINE | BIS-TRIS (MOPS) | BIS-TRIS (MES) | |
|------|-------|--------------|-----------------|----------------|---|
| 1 | Blue | 180 | 170 | 170 |  |
| 2 | Blue | 140 | 130 | 130 | |
| 3 | Blue | 100 | 93 | 93 | |
| 4 | Red | 75 | 70 | 72 | |
| 5 | Blue | 60 | 53 | 53 | |
| 6 | Blue | 45 | 41 | 42 | |
| 7 | Blue | 35 | 30 | 30 | |
| 8 | Green | 25 | 22 | 23 | |
| 9 | Blue | 15 | 14 | 14 | |
| 10 | Blue | 10 | 9 | 10 | |

Quality Control

Under suggested conditions, BYPL500 ExcelBand™

3-color High Range Protein Marker resolves 10 major bands in SDS-PAGE (Tris-Glycine, MOPS, and MES buffer) and after Western blotting transfer to a nitrocellulose membrane.

Other information

BYLABS claims all warranties with respect to this document, expressed or implied, including but not limited to those of merchantability or fitness for a particular purpose. In no event shall BYLABS be liable, whether in contract, tort, warranty, or under any statute or any other basis for special, incidental, indirect, punitive, multiple or consequential damages in connection with or arising from this document, including but not limited to the use thereof.

Caution: Not intended for human or animal diagnostic or therapeutic uses.

Description

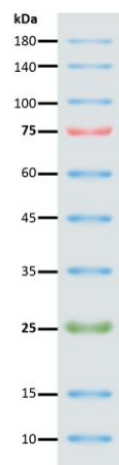
The BYPL 500 ExcelBand™ 3-color Regular Range Protein Marker is a ready to use three-color protein standard with 10 pre-stained proteins covering a wide range of molecular weights from 10 to 180 kDa (9 to 170 kDa in Bis-Tris (MOPS) buffer and 10 to 170 kDa in Bis-Tris (MES) buffer). Proteins are covalently coupled with a blue chromophore except for two reference bands (one green and one red band at 25 kDa and 75 kDa respectively) when separated on SDS-PAGE (Tris-Glycine buffer).

The BYPL 500 ExcelBand™ 3-color Regular Range Protein Marker is designed for monitoring protein separation during SDS-polyacrylamide gel electrophoresis, verification of Western transfer efficiency on membranes, (PVDF, nylon, or nitrocellulose) and for approximating the size of proteins.

The marker is supplied in gel loading buffer and is ready to use. **Do NOT heat, dilute, or add reducing agents before loading.**

ExcelBand™ 3-color High Range Protein Marker

BYPL500



Note. The apparent molecular weight (kDa) of each protein has been determined by calibration against an unstained protein standard; supplemental data should be considered for more accurate adjustments in different electrophoresis conditions.